

\$212,900 - 115 3670 139 Avenue, Edmonton

MLS® #E4426331

\$212,900

2 Bedroom, 2.00 Bathroom, 814 sqft

Condo / Townhouse on 0.00 Acres

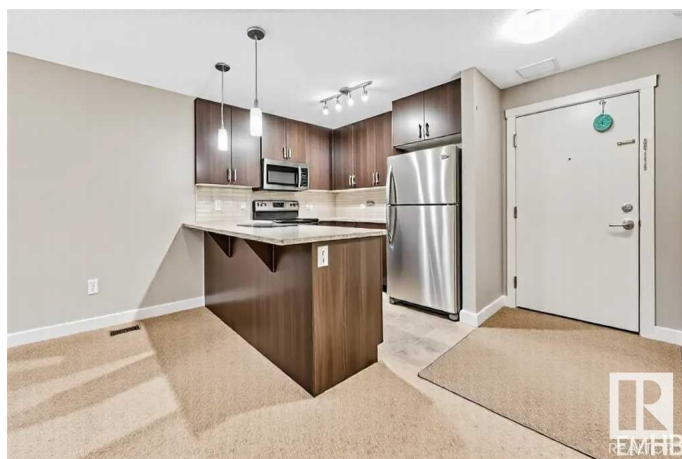
Clareview Town Centre, Edmonton, AB

Main floor unit! Nice 2-bedroom 2 full bathrooms in the North side Community of Clare view. One outside titled parking stall. PET FRIENDLY! Condo fee covers your utilities (Electricity, heat, water, sewer). The open concept kitchen offers plenty of cabinets. The Master bedroom has a walk-in closet and a 4pc ensuite bathroom. The second bedroom is generous in size and located on the other side of the living room. In-suite laundry room with facing washer / dryer, and storage space next to the second 4pc washroom. This Unit features balcony with natural gas outlet for your BBQ set up. Well maintained building. Minutes from the Clareview LRT transit and Bus station. With easy access to Anthony Henday and Yellow head Trail. Minutes from Clare view Rec. Centre and Belmont Shopping complex. Parks, all amenities and playgrounds are nearby. Bring all offers!!

Built in 2016

Essential Information

MLS® #	E4426331
Price	\$212,900
Bedrooms	2
Bathrooms	2.00
Full Baths	2
Square Footage	814



Acres	0.00
Year Built	2016
Type	Condo / Townhouse
Sub-Type	Lowrise Apartment
Style	Single Level Apartment
Status	Active

Community Information

Address	115 3670 139 Avenue
Area	Edmonton
Subdivision	Clareview Town Centre
City	Edmonton
County	ALBERTA
Province	AB
Postal Code	T5Y 3N5

Amenities

Amenities	On Street Parking, Hot Water Natural Gas, No Animal Home, No Smoking Home, Security Door, Natural Gas BBQ Hookup
Parking Spaces	1
Parking	Stall

Interior

Interior Features	ensuite bathroom
Appliances	Dishwasher-Built-In, Microwave Hood Fan, Refrigerator, Stacked Washer/Dryer, Stove-Electric, Window Coverings
Heating	Baseboard, Natural Gas
# of Stories	4
Stories	1
Has Basement	Yes
Basement	None, No Basement

Exterior

Exterior	Wood, Vinyl
Exterior Features	Golf Nearby, Landscaped, Public Transportation, Schools, Shopping Nearby, Ski Hill Nearby
Roof	Asphalt Shingles
Construction	Wood, Vinyl
Foundation	Concrete Perimeter

Additional Information

Date Listed	March 19th, 2025
Days on Market	114
Zoning	Zone 35
Condo Fee	\$513

DATA IS DEEMED RELIABLE BUT IS NOT GUARANTEED ACCURATE BY THE REALTORS® ASSOCIATION OF EDMONTON. COPYRIGHT 2025 BY THE REALTORS® ASSOCIATION OF EDMONTON. ALL RIGHTS RESERVED.Trademarks are owned or controlled by the Canadian Real Estate Association (CREA) and identify real estate professionals who are members of CREA (REALTOR®, REALTORS®) and/or the quality of services they provide (MLS®, Multiple Listing Service®)

Listing information last updated on July 11th, 2025 at 8:17pm MDT