

Courtesy Of Jeff D Jackson Of Bode

\$649,900 - 3 Ashbury Crescent, Spruce Grove

MLS® #E4428591

\$649,900

3 Bedroom, 2.50 Bathroom, 1,994 sqft

Single Family on 0.00 Acres

Jesperdale, Spruce Grove, AB

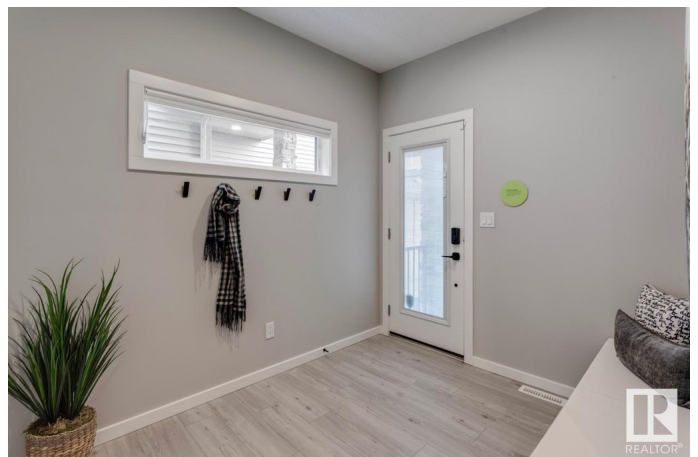
Luxury Living in Jesperdale, Spruce Grove! This stunning 1,928 sq ft two-story Show Home features 3 bedrooms, 2.5 baths, a bonus room, 9' ceilings and a separate basement entrance. It includes front and back landscaping and a fully finished, heated double garage, air conditioning and outdoor permanent lighting. Over \$141,355 in options and upgrades, including: a modern rear kitchen with two-tone GEM cabinetry, a larger island, built-in beverage fridge, upgraded Bespoke appliances and under-cabinet LED lightning. An open-concept main floor with a custom electric fireplace, luxury vinyl plank flooring, quartz countertops and upgraded fixtures. A primary bedroom with a tray ceiling, 5-piece spa-inspired ensuite featuring a soaker tub, U by Moen digital shower and a walk-in closet leading to an upgraded laundry room with Samsung washer/dryer and laundry sink. Custom built-ins, upgraded doors, extra windows for natural light, high-end lighting and premium finishes throughout. Photos are representative.

Built in 2023

Essential Information

MLS® # E4428591

Price \$649,900



Bedrooms	3
Bathrooms	2.50
Full Baths	2
Half Baths	1
Square Footage	1,994
Acres	0.00
Year Built	2023
Type	Single Family
Sub-Type	Detached Single Family
Style	2 and Half Storey
Status	Active

Community Information

Address	3 Ashbury Crescent
Area	Spruce Grove
Subdivision	Jesperdale
City	Spruce Grove
County	ALBERTA
Province	AB
Postal Code	T7X 3C6

Amenities

Amenities	Open Beam
Parking Spaces	4
Parking	Double Garage Attached

Interior

Interior Features	ensuite bathroom			
Appliances	Dishwasher-Built-In,	Dryer,	Oven-Microwave,	Refrigerator,
	Stove-Electric, Washer			
Heating	Forced Air-1, Natural Gas			
Fireplace	Yes			
Fireplaces	Insert			
Stories	2			
Has Basement	Yes			
Basement	Full, Unfinished			

Exterior

Exterior	Wood, Vinyl
----------	-------------

Exterior Features	Park/Reserve, Playground Nearby, Schools, Shopping Nearby
Roof	Asphalt Shingles
Construction	Wood, Vinyl
Foundation	Concrete Perimeter

Additional Information

Date Listed	April 2nd, 2025
Days on Market	30
Zoning	Zone 91

DATA IS DEEMED RELIABLE BUT IS NOT GUARANTEED ACCURATE BY THE REALTORS® ASSOCIATION OF EDMONTON. COPYRIGHT 2025 BY THE REALTORS® ASSOCIATION OF EDMONTON. ALL RIGHTS RESERVED.Trademarks are owned or controlled by the Canadian Real Estate Association (CREA) and identify real estate professionals who are members of CREA (REALTOR®, REALTORS®) and/or the quality of services they provide (MLS®, Multiple Listing Service®)

Listing information last updated on May 2nd, 2025 at 11:48am MDT