

Courtesy Of Jeff D Jackson Of Bode

## \$563,400 - 51 Ashbury Crescent, Spruce Grove

MLS® #E4432296

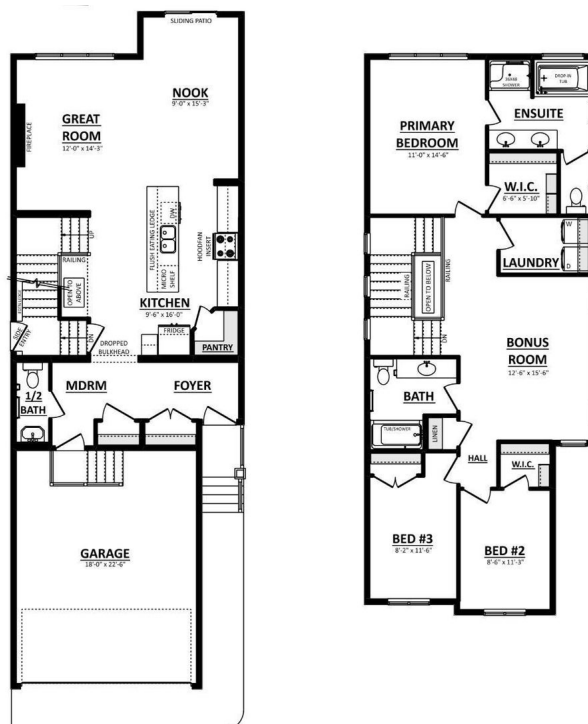
**\$563,400**

3 Bedroom, 2.50 Bathroom, 1,934 sqft

Single Family on 0.00 Acres

Jesperdale, Spruce Grove, AB

The Aera offers smart and stylish living designed to fit the rhythm of modern life. On the main floor, youâ€™re welcomed into a bright, open-concept space where the kitchen, dining area, and great room flow together seamlessly. The kitchen features full quartz countertops, a large island, and a hood fan above the stoveâ€”blending functionality with clean, contemporary design. At the heart of the living space, a fireplace adds a cozy focal point, perfect for chilly evenings or quiet weekends at home. Upstairs, youâ€™ll find three bedrooms, including a private primary bedroom with a walk-in closet and a well-appointed ensuite featuring dual sinks and a walk-in shower. A central bonus room creates a flexible space for movie nights, study sessions, or a cozy retreat, while the upstairs laundry room keeps day-to-day tasks simple and efficient. A side entrance for flexibility and future development potential, as well as a double attached garage complete this beautiful home. Photos representative.



Built in 2025

### Essential Information

MLS® # E4432296

Price \$563,400

Bedrooms 3

Bathrooms	2.50
Full Baths	2
Half Baths	1
Square Footage	1,934
Acres	0.00
Year Built	2025
Type	Single Family
Sub-Type	Detached Single Family
Style	2 Storey
Status	Active

### **Community Information**

Address	51 Ashbury Crescent
Area	Spruce Grove
Subdivision	Jesperdale
City	Spruce Grove
County	ALBERTA
Province	AB
Postal Code	T7X 3C6

### **Amenities**

Amenities	No Animal Home, No Smoking Home
Parking Spaces	4
Parking	Double Garage Attached

### **Interior**

Interior Features	ensuite bathroom
Appliances	None
Heating	Forced Air-1, Natural Gas
Fireplace	Yes
Fireplaces	Insert
Stories	2
Has Basement	Yes
Basement	Full, Unfinished

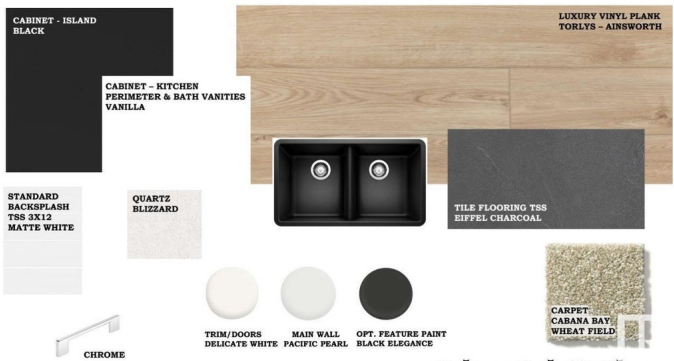
### **Exterior**

Exterior	Wood, Stone, Vinyl
Exterior Features	Park/Reserve, Playground Nearby, Schools, Shopping Nearby
Roof	Asphalt Shingles

Construction Wood, Stone, Vinyl  
Foundation Concrete Perimeter

Additional Information

Date Listed April 23rd, 2025  
Days on Market 8  
Zoning Zone 91



DATA IS DEEMED RELIABLE BUT IS NOT GUARANTEED ACCURATE BY THE REALTORS® ASSOCIATION OF EDMONTON. COPYRIGHT 2025 BY THE REALTORS® ASSOCIATION OF EDMONTON. ALL RIGHTS RESERVED.Trademarks are owned or controlled by the Canadian Real Estate Association (CREA) and identify real estate professionals who are members of CREA (REALTOR®, REALTORS®) and/or the quality of services they provide (MLS®, Multiple Listing Service®)  
Listing information last updated on May 1st, 2025 at 4:32pm MDT