

## \$514,900 - 9933 222a Street, Edmonton

MLS® #E4433074

**\$514,900**

4 Bedroom, 3.50 Bathroom, 1,567 sqft

Single Family on 0.00 Acres

Secord, Edmonton, AB

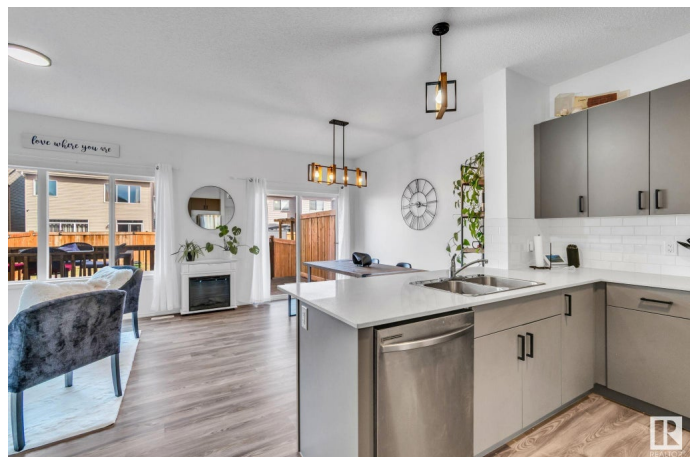
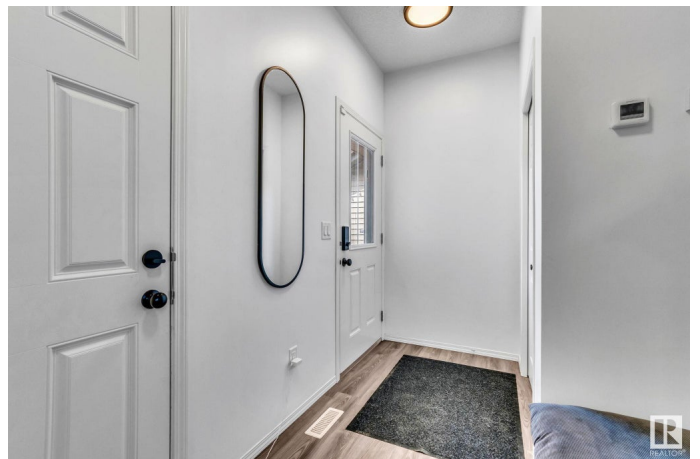
Welcome to Secord â€” Where Comfort Meets Community Living. This beautiful home offers over 2,150 sqft of thoughtfully designed living space in a peaceful, family-friendly neighborhood. With a state-of-the-art recreation center currently under construction nearby, this is the perfect place to plant roots and enjoy the best of suburban living. Step inside this air-conditioned gem and be welcomed by a spacious foyer that opens up to a stunning open-concept main floor. The heart of the home is the kitchen, featuring sleek stainless steel appliances, quartz countertops, a generously sized pantry, and a seamless flow into the bright, inviting living room â€” ideal for hosting and everyday living. Upstairs, youâ€™ll find two spacious bedrooms, a full bath, and a luxurious master retreat complete with a walk-in closet and a 4-piece ensuite. Need even more space? The fully finished basement includes an additional bedroom and a modern 3 bathroom, perfect for guests, a home office, or extra family space.

Built in 2020

### Essential Information

MLS® # E4433074

Price \$514,900



Bedrooms	4
Bathrooms	3.50
Full Baths	3
Half Baths	1
Square Footage	1,567
Acres	0.00
Year Built	2020
Type	Single Family
Sub-Type	Detached Single Family
Style	2 Storey
Status	Active

### Community Information

Address	9933 222a Street
Area	Edmonton
Subdivision	Secord
City	Edmonton
County	ALBERTA
Province	AB
Postal Code	T5T 7J1

### Amenities

Amenities	Air Conditioner, Deck, No Smoking Home, Secured Parking
Parking	Double Garage Attached

### Interior

Interior Features	ensuite bathroom
Appliances	Air Conditioning-Central, Dishwasher-Built-In, Dryer, Microwave Hood Fan, Oven-Built-In, Oven-Microwave, Refrigerator, Stove-Electric, Washer, Window Coverings
Heating	Forced Air-1, Natural Gas
Stories	3
Has Basement	Yes
Basement	Full, Finished

### Exterior

Exterior	Wood, Brick, Vinyl
Exterior Features	Fenced, Golf Nearby, Landscaped, Low Maintenance Landscape, Park/Reserve, Playground Nearby, Public Transportation, Schools,

	Shopping Nearby, Stream/Pond
Roof	Asphalt Shingles
Construction	Wood, Brick, Vinyl
Foundation	Concrete Perimeter

### **Additional Information**

Date Listed	April 26th, 2025
Days on Market	6
Zoning	Zone 58

DATA IS DEEMED RELIABLE BUT IS NOT GUARANTEED ACCURATE BY THE REALTORS® ASSOCIATION OF EDMONTON. COPYRIGHT 2025 BY THE REALTORS® ASSOCIATION OF EDMONTON. ALL RIGHTS RESERVED. Trademarks are owned or controlled by the Canadian Real Estate Association (CREA) and identify real estate professionals who are members of CREA (REALTOR®, REALTORS®) and/or the quality of services they provide (MLS®, Multiple Listing Service®)

Listing information last updated on May 2nd, 2025 at 10:02am MDT