

\$519,900 - 9164 Cooper Crescent, Edmonton

MLS® #E4435048

\$519,900

5 Bedroom, 3.50 Bathroom, 1,583 sqft

Single Family on 0.00 Acres

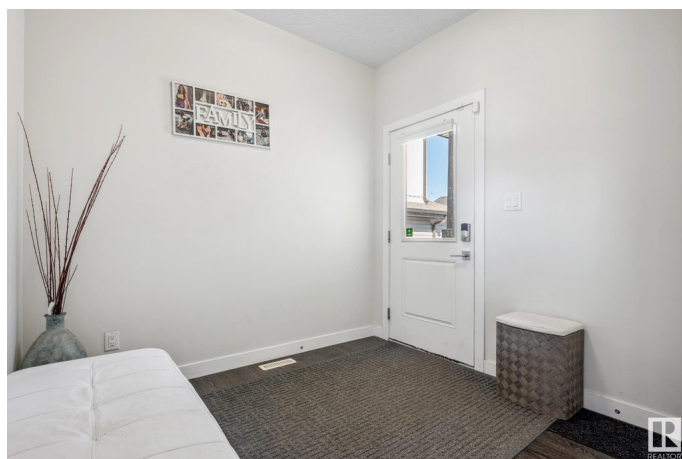
Chappelle Area, Edmonton, AB

NEW LISTING!. This beautiful duplex is ready for a new owner. Live in a home that feels almost new. The main floor features a 9' ceiling, a galley-style kitchen, and a living room with a cozy fireplace. Upstairs features 3 spacious bedrooms and a bonus room/flex room. The primary bedroom is bright and has both a 5-pc ensuite and a walk-in closet. The basement is fully finished with 2 more bedrooms, a 4-pc bathroom and a large storage room. The sunny, south-facing backyard is a great space to spend your evening. The home comes with air-conditioning. Chappelle offers schools, multiple shopping plazas and quick access out to 41 Avenue.

Built in 2018

Essential Information

| | |
|----------------|-----------|
| MLS® # | E4435048 |
| Price | \$519,900 |
| Bedrooms | 5 |
| Bathrooms | 3.50 |
| Full Baths | 3 |
| Half Baths | 1 |
| Square Footage | 1,583 |
| Acres | 0.00 |
| Year Built | 2018 |



| | |
|----------|---------------|
| Type | Single Family |
| Sub-Type | Half Duplex |
| Style | 2 Storey |
| Status | Active |

Community Information

| | |
|-------------|----------------------|
| Address | 9164 Cooper Crescent |
| Area | Edmonton |
| Subdivision | Chappelle Area |
| City | Edmonton |
| County | ALBERTA |
| Province | AB |
| Postal Code | T6W 3K9 |

Amenities

| | |
|-----------|---|
| Amenities | Air Conditioner, Ceiling 9 ft., Deck, Parking-Extra |
| Parking | Double Garage Attached |

Interior

| | |
|-------------------|---|
| Interior Features | ensuite bathroom |
| Appliances | Dishwasher-Built-In, Dryer, Garage Opener, Microwave Hood Fan, Refrigerator, Stove-Electric, Washer |
| Heating | Forced Air-1, Natural Gas |
| Fireplace | Yes |
| Fireplaces | Insert |
| Stories | 3 |
| Has Basement | Yes |
| Basement | Full, Finished |

Exterior

| | |
|-------------------|---|
| Exterior | Wood, Vinyl |
| Exterior Features | Airport Nearby, Fenced, Landscaped, Playground Nearby, Private Setting, Public Transportation, Schools, Shopping Nearby |
| Roof | Asphalt Shingles |
| Construction | Wood, Vinyl |
| Foundation | Concrete Perimeter |

Additional Information

| | |
|-------------|---------------|
| Date Listed | May 7th, 2025 |
|-------------|---------------|

Days on Market 32

Zoning Zone 55

DATA IS DEEMED RELIABLE BUT IS NOT GUARANTEED ACCURATE BY THE REALTORS® ASSOCIATION OF EDMONTON. COPYRIGHT 2025 BY THE REALTORS® ASSOCIATION OF EDMONTON. ALL RIGHTS RESERVED. Trademarks are owned or controlled by the Canadian Real Estate Association (CREA) and identify real estate professionals who are members of CREA (REALTOR®, REALTORS®) and/or the quality of services they provide (MLS®, Multiple Listing Service®)

Listing information last updated on June 8th, 2025 at 9:02am MDT