

## \$479,000 - 64 Aspen Crescent, St. Albert

MLS® #E4439712

**\$479,000**

5 Bedroom, 2.50 Bathroom, 1,280 sqft

Single Family on 0.00 Acres

Akinsdale, St. Albert, AB

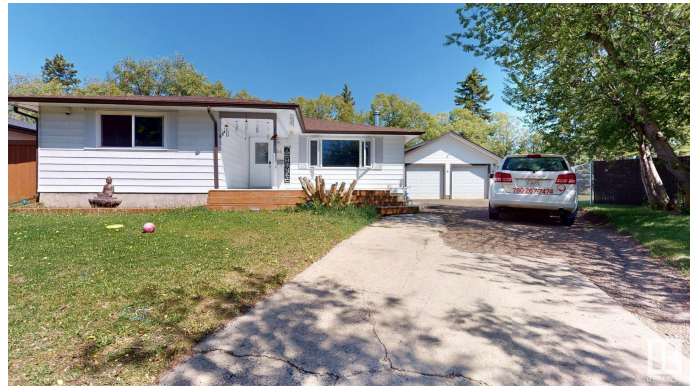
This spacious home with a large driveway is situated on a generous pie-shaped lot. The main floor features a spacious living room, separate dining area, and kitchen. There are three generously sized bedrooms, including a primary bedroom with its own ensuite bathroom, plus a second full bathroom on the main level. The FULLY FINISHED BASEMENT with SEPARATE ENTRANCE offers heated flooring and includes 2 bedrooms, a full bathroom, a second living room, second kitchen, den, laundry area, and a storage room—ideal for guests, extended family. The furnace room also provides additional storage, and overall, there is an abundance of storage space throughout the home. Outside, the property features a massive garage, RV parking at the back, and a large driveway that easily accommodates 7-8 vehicles. A storage shed & extra storage areas. Recent updates include upgraded electrical sockets. Ample natural light throughout home creates a warm and welcoming atmosphere. Theatre setup in garage ; disco led lights also there

Built in 1974

### Essential Information

MLS® # E4439712

Price \$479,000



Bedrooms	5
Bathrooms	2.50
Full Baths	2
Half Baths	1
Square Footage	1,280
Acres	0.00
Year Built	1974
Type	Single Family
Sub-Type	Detached Single Family
Style	Bungalow
Status	Active

### Community Information

Address	64 Aspen Crescent
Area	St. Albert
Subdivision	Akinsdale
City	St. Albert
County	ALBERTA
Province	AB
Postal Code	T8N 2L8

### Amenities

Amenities	Deck, Detectors Smoke
Parking	Double Garage Detached

### Interior

Interior Features	ensuite bathroom
Appliances	Air Conditioning-Central, Dryer, Oven-Microwave, Washer, Refrigerators-Two, Stoves-Two, Garage Heater
Heating	Forced Air-1, Natural Gas
Stories	2
Has Suite	Yes
Has Basement	Yes
Basement	Full, Finished

### Exterior

Exterior	Wood, Metal, Stucco
Exterior Features	Fenced, Playground Nearby, Public Transportation, Schools, Shopping Nearby

Roof	Asphalt Shingles
Construction	Wood, Metal, Stucco
Foundation	Concrete Perimeter

### **School Information**

Elementary	Vital Grandin Catholic Sch
Middle	Ecole Secondaire Sainte Ma
High	Ecole Secondaire Sainte M

### **Additional Information**

Date Listed	May 31st, 2025
Days on Market	16
Zoning	Zone 24

DATA IS DEEMED RELIABLE BUT IS NOT GUARANTEED ACCURATE BY THE REALTORS® ASSOCIATION OF EDMONTON. COPYRIGHT 2025 BY THE REALTORS® ASSOCIATION OF EDMONTON. ALL RIGHTS RESERVED. Trademarks are owned or controlled by the Canadian Real Estate Association (CREA) and identify real estate professionals who are members of CREA (REALTOR®, REALTORS®) and/or the quality of services they provide (MLS®, Multiple Listing Service®)

Listing information last updated on June 16th, 2025 at 7:02pm MDT