

## \$485,000 - 17411 98 Street, Edmonton

MLS® #E4440731

**\$485,000**

5 Bedroom, 3.50 Bathroom, 2,114 sqft

Single Family on 0.00 Acres

Elsinore, Edmonton, AB

Welcome to this spacious family home in the sought-after community of Elsinore! With over 2,114 sq ft plus a partly finished basement, there's room for everyone. The main floor features a bedroom and convenient half bath, vaulted ceilings in the bright living room, a large dining area, and a cozy family room with fireplace and plenty of windows. The kitchen includes a breakfast nook and flows seamlessly into the main living space. Hardwood and tile flooring run throughout the main floor. Upstairs, you'll find 3 generously sized bedrooms, including a primary suite with large corner soaker tub in the ensuite and an additional 4-piece bathroom. The basement offers even more living space with an additional bedroom, den/office, a large 4-piece bathroom, and a spacious storage area. This home has upgrades including triple pane windows. Enjoy summers in the large backyard with a two-tiered deck backing onto green space—perfect for relaxing or entertaining!

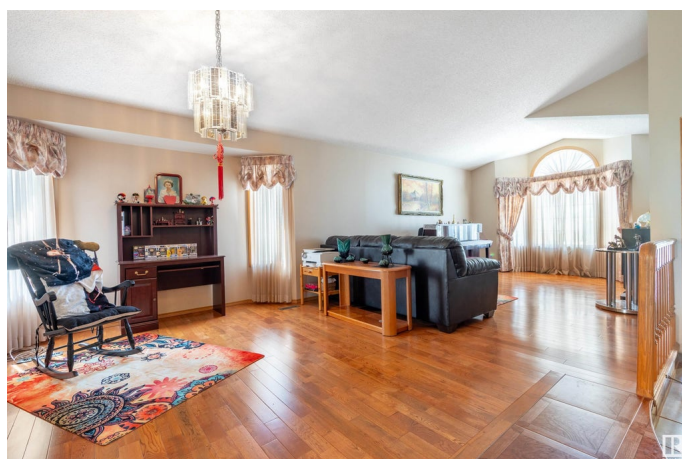
Built in 1989

### Essential Information

MLS® # E4440731

Price \$485,000

Bedrooms 5



Bathrooms	3.50
Full Baths	3
Half Baths	1
Square Footage	2,114
Acres	0.00
Year Built	1989
Type	Single Family
Sub-Type	Detached Single Family
Style	1 and Half Storey
Status	Active

### Community Information

Address	17411 98 Street
Area	Edmonton
Subdivision	Elsinore
City	Edmonton
County	ALBERTA
Province	AB
Postal Code	T5X 5V5

### Amenities

Amenities	Closet Organizers, Deck, See Remarks
Parking Spaces	4
Parking	Double Garage Attached

### Interior

Interior Features	ensuite bathroom
Appliances	Dishwasher-Built-In, Dryer, Garage Opener, Refrigerator, Stove-Electric, Washer, Window Coverings
Heating	Forced Air-1, Natural Gas
Fireplace	Yes
Fireplaces	Mantel, Tile Surround
Stories	2
Has Basement	Yes
Basement	Full, Partially Finished

### Exterior

Exterior	Wood, Vinyl
Exterior Features	Fenced, Flat Site, No Back Lane, Playground Nearby, Public

	Transportation, Schools, Shopping Nearby, See Remarks
Roof	Asphalt Shingles
Construction	Wood, Vinyl
Foundation	Concrete Perimeter

### **Additional Information**

Date Listed	June 5th, 2025
Days on Market	11
Zoning	Zone 27

DATA IS DEEMED RELIABLE BUT IS NOT GUARANTEED ACCURATE BY THE REALTORS® ASSOCIATION OF EDMONTON. COPYRIGHT 2025 BY THE REALTORS® ASSOCIATION OF EDMONTON. ALL RIGHTS RESERVED. Trademarks are owned or controlled by the Canadian Real Estate Association (CREA) and identify real estate professionals who are members of CREA (REALTOR®, REALTORS®) and/or the quality of services they provide (MLS®, Multiple Listing Service®)

Listing information last updated on June 16th, 2025 at 2:02pm MDT