

\$445,000 - 9 Norelle Terrace, St. Albert

MLS® #E4440815

\$445,000

4 Bedroom, 2.50 Bathroom, 1,218 sqft

Single Family on 0.00 Acres

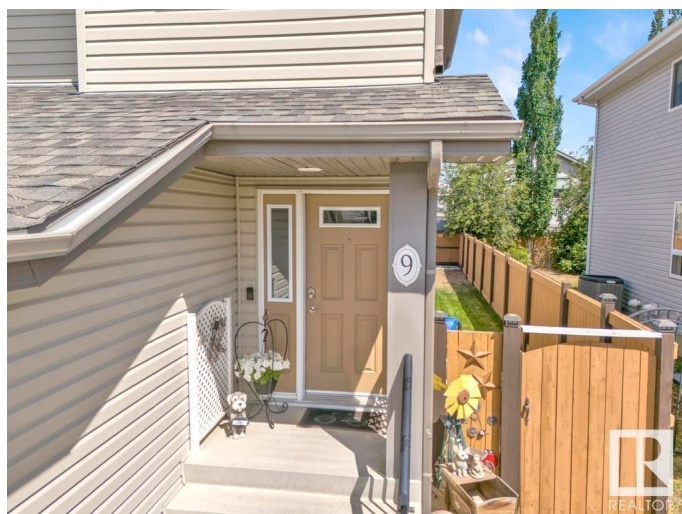
North Ridge, St. Albert, AB

Nestled in a serene neighborhood, this stunning half duplex truly stands out with its immaculate show-home condition. Spanning three beautifully finished levels, it boasts a double attached garage and an expansive deck that overlooks a surprisingly spacious backyard, perfect for family gatherings and outdoor activities. Inside, you'll find three generously sized bedrooms, complemented by the convenience of upstairs laundry. The open-concept main floor features elegant white kitchen cabinets, a striking island, and modern appliances that make cooking a delight. The professionally finished basement adds even more value, showcasing a comfortable bedroom with an en-suite bathroom, along with a cozy family room equipped with a kitchenette. Recent upgrades, including new light fixtures, toilets, and flooring, enhance the overall appeal, making this home a remarkable find for any family.

Built in 2009

Essential Information

MLS® #	E4440815
Price	\$445,000
Bedrooms	4
Bathrooms	2.50
Full Baths	2



Half Baths	1
Square Footage	1,218
Acres	0.00
Year Built	2009
Type	Single Family
Sub-Type	Half Duplex
Style	2 Storey
Status	Active

Community Information

Address	9 Norelle Terrace
Area	St. Albert
Subdivision	North Ridge
City	St. Albert
County	ALBERTA
Province	AB
Postal Code	T8N 3V1

Amenities

Amenities	Carbon Monoxide Detectors, Detectors Smoke, No Animal Home, No Smoking Home
Parking Spaces	4
Parking	Double Garage Attached

Interior

Interior Features	ensuite bathroom
Appliances	Dishwasher-Built-In, Dryer, Microwave Hood Fan, Refrigerator, Stove-Electric, Washer, Window Coverings, Refrigerators-Two
Heating	Forced Air-1, Natural Gas
Stories	3
Has Basement	Yes
Basement	Full, Finished

Exterior

Exterior	Wood, Vinyl
Exterior Features	Fenced, Landscaped, See Remarks
Roof	Asphalt Shingles
Construction	Wood, Vinyl
Foundation	Concrete Perimeter

School Information

Elementary	J.J. Nearing Catholic Elem
Middle	Sturgeon Heights
High	Bellerose Composite High S

Additional Information

Date Listed	June 6th, 2025
Days on Market	10
Zoning	Zone 24

DATA IS DEEMED RELIABLE BUT IS NOT GUARANTEED ACCURATE BY THE REALTORS® ASSOCIATION OF EDMONTON. COPYRIGHT 2025 BY THE REALTORS® ASSOCIATION OF EDMONTON. ALL RIGHTS RESERVED.Trademarks are owned or controlled by the Canadian Real Estate Association (CREA) and identify real estate professionals who are members of CREA (REALTOR®, REALTORS®) and/or the quality of services they provide (MLS®, Multiple Listing Service®)

Listing information last updated on June 16th, 2025 at 1:02pm MDT