

\$529,000 - 4227 Prowse Way, Edmonton

MLS® #E4442070

\$529,000

3 Bedroom, 2.50 Bathroom, 1,453 sqft
Single Family on 0.00 Acres

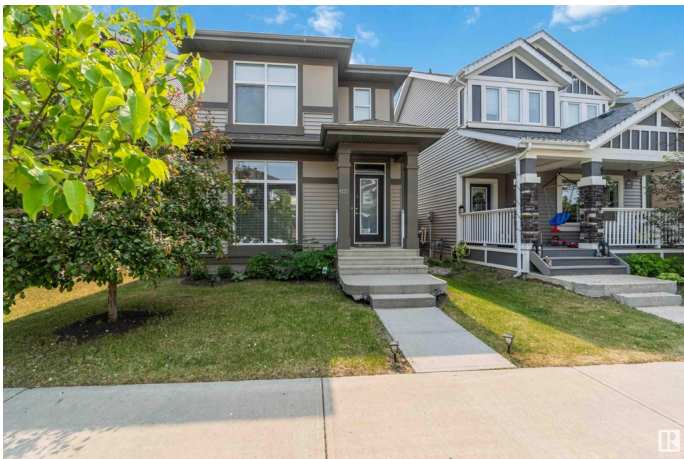
Paisley, Edmonton, AB

This meticulously maintained home boasts 3 spacious bedrooms and 2.5 baths, offering ample room for comfort and privacy. The main level features a beautiful open-to-below design to the lower floor, creating an airy, inviting atmosphere. A double garage adds convenience and extra storage space. The property has been kept in exceptional condition, making it move-in ready for its new owners. Perfectly located for easy access to local amenities, schools, and parks. Donâ€™t miss out on the chance to call this gem your home!

Built in 2015

Essential Information

MLS® #	E4442070
Price	\$529,000
Bedrooms	3
Bathrooms	2.50
Full Baths	2
Half Baths	1
Square Footage	1,453
Acres	0.00
Year Built	2015
Type	Single Family
Sub-Type	Detached Single Family
Style	2 Storey



Status	Active
--------	--------

Community Information

Address	4227 Prowse Way
Area	Edmonton
Subdivision	Paisley
City	Edmonton
County	ALBERTA
Province	AB
Postal Code	T6W 3A6

Amenities

Amenities	See Remarks
Parking	Double Garage Detached

Interior

Appliances	Alarm/Security System, Dishwasher-Built-In, Dryer, Microwave Hood Fan, Oven-Built-In, Refrigerator, Stove-Electric, Washer, Window Coverings, See Remarks
Heating	Forced Air-1, Natural Gas
Stories	3
Has Basement	Yes
Basement	Full, Partially Finished

Exterior

Exterior	Wood, Vinyl
Exterior Features	Schools, Shopping Nearby
Roof	Asphalt Shingles
Construction	Wood, Vinyl
Foundation	Concrete Perimeter

Additional Information

Date Listed	June 12th, 2025
Days on Market	45
Zoning	Zone 55

DATA IS DEEMED RELIABLE BUT IS NOT GUARANTEED ACCURATE BY THE REALTORS® ASSOCIATION OF EDMONTON. COPYRIGHT 2025 BY THE REALTORS® ASSOCIATION OF EDMONTON. ALL RIGHTS RESERVED. Trademarks are owned or controlled by the Canadian Real Estate Association (CREA) and identify real estate professionals who are members of CREA (REALTOR®, REALTORS®) and/or the quality of services they provide (MLS®, Multiple Listing Service®)

Listing information last updated on July 27th, 2025 at 12:32pm MDT