

\$559,999 - 171 Caledon Crescent, Spruce Grove

MLS® #E4442793

\$559,999

3 Bedroom, 2.50 Bathroom, 1,862 sqft
Single Family on 0.00 Acres

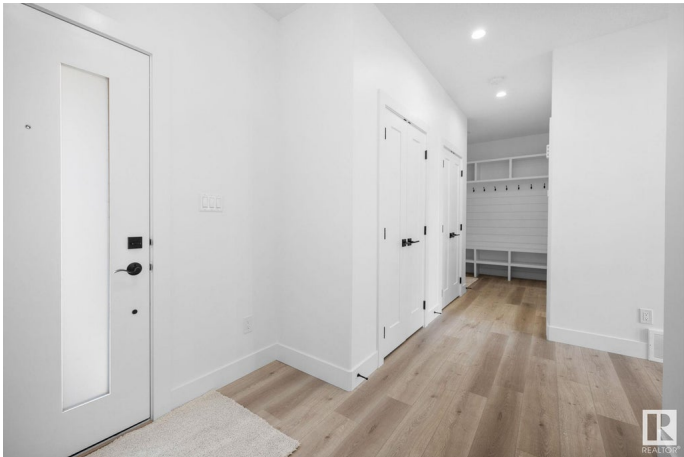
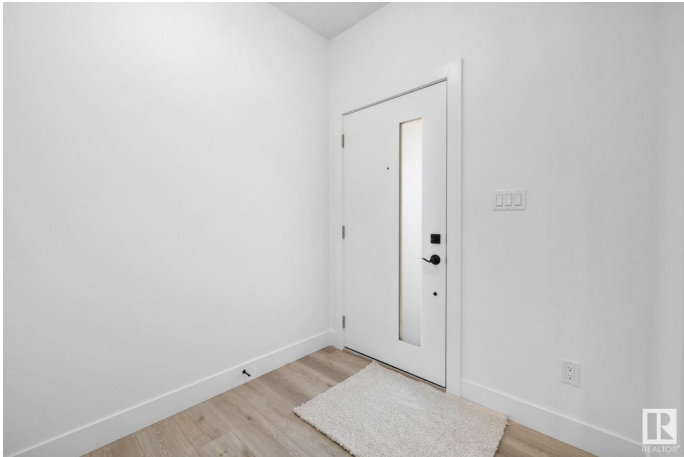
Copperhaven, Spruce Grove, AB

Step into this stunning Copperhaven home offering nearly 1,900 sq. ft. of thoughtfully designed living space. A functional mudroom connects to a walk-through pantry, leading into a chef-inspired kitchen complete with ceiling-height cabinets and sleek quartz countertops. The open-to-above great room is a true showpiece, highlighted by an elegant fireplace feature wall—perfect for relaxing or entertaining. Upstairs, you’ll find three spacious bedrooms and a versatile bonus room ideal for family movie nights. The master suite is a luxurious retreat with a tray ceiling, a spa-like 5-piece ensuite and direct access to the laundry room through the walk-in closet! Additional highlights include a separate side entrance and an unfinished basement ready for your personal touch. Located within walking distance to schools, this is the perfect home for growing families. Photos are from a similar home—actual finishes may vary. July possession available!

Built in 2025

Essential Information

MLS® #	E4442793
Price	\$559,999
Bedrooms	3
Bathrooms	2.50



Full Baths	2
Half Baths	1
Square Footage	1,862
Acres	0.00
Year Built	2025
Type	Single Family
Sub-Type	Detached Single Family
Style	2 Storey
Status	Active

Community Information

Address	171 Caledon Crescent
Area	Spruce Grove
Subdivision	Copperhaven
City	Spruce Grove
County	ALBERTA
Province	AB
Postal Code	T7X 4E3

Amenities

Amenities	Ceiling 9 ft., See Remarks, HRV System, Natural Gas BBQ Hookup, 9 ft. Basement Ceiling
Parking	Double Garage Attached

Interior

Interior Features	ensuite bathroom
Appliances	Garage Opener, Hood Fan, Builder Appliance Credit
Heating	Forced Air-1, Natural Gas
Fireplace	Yes
Fireplaces	Freestanding
Stories	2
Has Basement	Yes
Basement	Full, Unfinished

Exterior

Exterior	Wood, Stone, Vinyl
Exterior Features	Schools, Partially Fenced
Roof	Asphalt Shingles
Construction	Wood, Stone, Vinyl

Foundation Concrete Perimeter

Additional Information

Date Listed June 17th, 2025
Days on Market 26
Zoning Zone 91

DATA IS DEEMED RELIABLE BUT IS NOT GUARANTEED ACCURATE BY THE REALTORS® ASSOCIATION OF EDMONTON. COPYRIGHT 2025 BY THE REALTORS® ASSOCIATION OF EDMONTON. ALL RIGHTS RESERVED.Trademarks are owned or controlled by the Canadian Real Estate Association (CREA) and identify real estate professionals who are members of CREA (REALTOR®, REALTORS®) and/or the quality of services they provide (MLS®, Multiple Listing Service®)
Listing information last updated on July 13th, 2025 at 6:32pm MDT