

## \$410,000 - 662 Blackstone Bv, Leduc

MLS® #E4444110

**\$410,000**

4 Bedroom, 3.50 Bathroom, 1,174 sqft

Single Family on 0.00 Acres

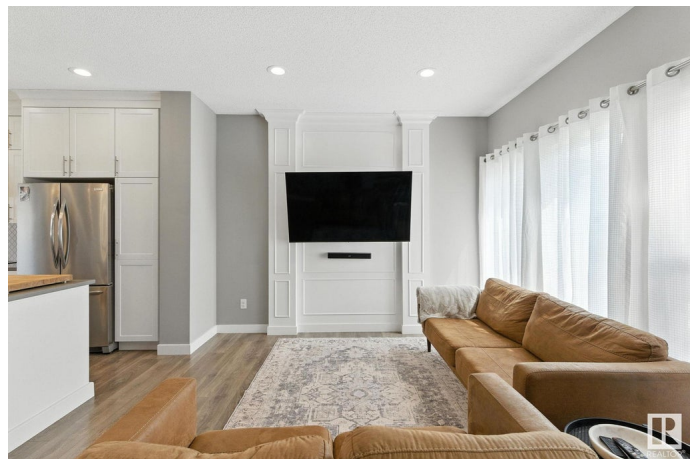
Black Stone, Leduc, AB

Stunning end-unit townhome with fully finished basement and double detached garage, perfectly positioned across from a park, playground, and winter skating rink! Step inside and experience luxury at every turn, starting with 9-foot ceilings and a bright, open-concept main floor. The chef-inspired kitchen boasts modern cream cabinetry, a quartz island with a custom table extension, and a spacious eat-in layout, ideal for entertaining. Upstairs, the elegant primary suite features a large walk-in closet and a spa-like ensuite with an oversized glass shower. Two additional bedrooms and a 4-piece bath complete the upper level. Downstairs, enjoy a fully renovated basement featuring a sleek bar, cozy living room, spacious bedroom, and a stylish 3-piece bathroom, ideal for guests or additional living space. This home offers modern style, unbeatable location, and true move-in-ready comfort.

Built in 2019

### Essential Information

MLS® #	E4444110
Price	\$410,000
Bedrooms	4
Bathrooms	3.50



Full Baths	3
Half Baths	1
Square Footage	1,174
Acres	0.00
Year Built	2019
Type	Single Family
Sub-Type	Residential Attached
Style	2 Storey
Status	Active

### Community Information

Address	662 Blackstone Bv
Area	Leduc
Subdivision	Black Stone
City	Leduc
County	ALBERTA
Province	AB
Postal Code	T9E 1H2

### Amenities

Amenities	On Street Parking, Carbon Monoxide Detectors, Ceiling 9 ft., Detectors Smoke, Exterior Walls- 2"x6", Front Porch, Hot Wtr Tank-Energy Star, No Animal Home, No Smoking Home, Smart/Program. Thermostat, Vinyl Windows, HRV System
Parking	Double Garage Detached

### Interior

Interior Features	ensuite bathroom
Appliances	Dishwasher-Built-In, Dryer, Garage Opener, Hood Fan, Refrigerator, Stove-Electric, Washer, Window Coverings
Heating	Forced Air-1, Natural Gas
Stories	3
Has Basement	Yes
Basement	Full, Finished

### Exterior

Exterior	Wood, Stone, Vinyl
Exterior Features	Airport Nearby, Back Lane
Roof	Asphalt Shingles

Construction	Wood, Stone, Vinyl
Foundation	Concrete Perimeter

**Additional Information**

Date Listed	June 24th, 2025
Days on Market	20
Zoning	Zone 81

DATA IS DEEMED RELIABLE BUT IS NOT GUARANTEED ACCURATE BY THE REALTORS® ASSOCIATION OF EDMONTON. COPYRIGHT 2025 BY THE REALTORS® ASSOCIATION OF EDMONTON. ALL RIGHTS RESERVED.Trademarks are owned or controlled by the Canadian Real Estate Association (CREA) and identify real estate professionals who are members of CREA (REALTOR®, REALTORS®) and/or the quality of services they provide (MLS®, Multiple Listing Service®)

Listing information last updated on July 14th, 2025 at 10:02am MDT