

\$560,000 - 4511 Kinsella Link, Edmonton

MLS® #E4449480

\$560,000

4 Bedroom, 3.50 Bathroom, 1,804 sqft

Single Family on 0.00 Acres

Keswick Area, Edmonton, AB

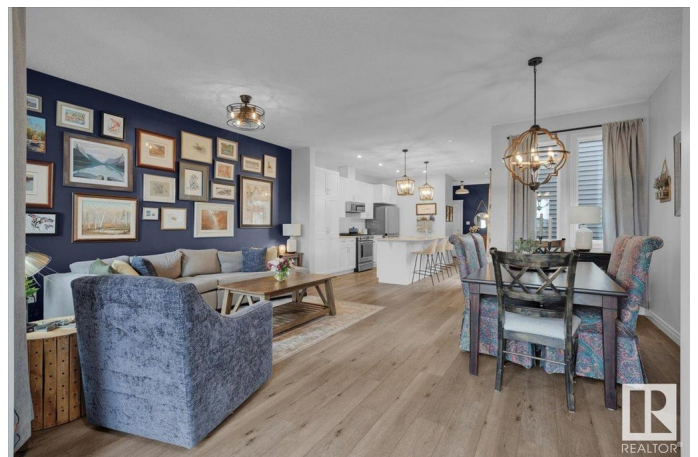
LIKE NEW, PACESETTER home w/ a double attached garage & LOADS OF UPGRADES. Located on a wide, quiet street, w/ ample parking & only minutes from walking paths, ponds, schools & MORE! Inside the home, youâ€™ll fall in love w/ the open concept living space, & loads of natural light from the large windows along the side & front of the home! The kitchen has white cabinetry, quartz counters, pull out drawers, & upgraded appliances (Including a gas stove). At the back is a mudroom, 2pc bathroom & access to your DOUBLE ATTACHED GARAGE. Upstairs has a primary room that can fit a king bed, a walk-in closet, & a spa-like 4pc ensuite w/ double sinks & a glass shower w/ a tile surround. Upstairs is completed w/ 2 more bedrooms, a full bathroom & a bonus room. The basement was finished BY THE BUILDER, & has a large rec room, extra bedroom, & 4pc bathroom. Outside youâ€™ll find a stone patio w/ a pergola. Other features include: HRV system, Rough in for A/C, Tankless hot water, quartz in the bathrooms, & MORE!

Built in 2021

Essential Information

MLS® # E4449480

Price \$560,000



Bedrooms	4
Bathrooms	3.50
Full Baths	3
Half Baths	1
Square Footage	1,804
Acres	0.00
Year Built	2021
Type	Single Family
Sub-Type	Detached Single Family
Style	2 Storey
Status	Active

Community Information

Address	4511 Kinsella Link
Area	Edmonton
Subdivision	Keswick Area
City	Edmonton
County	ALBERTA
Province	AB
Postal Code	T6W 4J9

Amenities

Amenities	Hot Water Instant, No Animal Home, No Smoking Home, Natural Gas BBQ Hookup
Parking Spaces	4
Parking	Double Garage Attached, Insulated

Interior

Interior Features	ensuite bathroom
Appliances	Dishwasher-Built-In, Dryer, Garage Control, Garage Opener, Microwave Hood Fan, Refrigerator, Stove-Gas, Washer, Window Coverings, TV Wall Mount
Heating	Forced Air-1, Natural Gas
Stories	3
Has Basement	Yes
Basement	Full, Finished

Exterior

Exterior	Wood, Stone, Vinyl
----------	--------------------

Exterior Features	Fenced, Landscaped, Low Maintenance Landscape, Playground Nearby, Schools, Shopping Nearby
Roof	Asphalt Shingles
Construction	Wood, Stone, Vinyl
Foundation	Concrete Perimeter

School Information

Elementary	Joey Moss/Joan Carr
Middle	Joey Moss/Joan Carr
High	Harry Ainlay/Father Michael

Additional Information

Date Listed	July 24th, 2025
Days on Market	2
Zoning	Zone 56

DATA IS DEEMED RELIABLE BUT IS NOT GUARANTEED ACCURATE BY THE REALTORS® ASSOCIATION OF EDMONTON. COPYRIGHT 2025 BY THE REALTORS® ASSOCIATION OF EDMONTON. ALL RIGHTS RESERVED. Trademarks are owned or controlled by the Canadian Real Estate Association (CREA) and identify real estate professionals who are members of CREA (REALTOR®, REALTORS®) and/or the quality of services they provide (MLS®, Multiple Listing Service®)

Listing information last updated on July 26th, 2025 at 5:47pm MDT