

\$514,900 - N/A, Edmonton

MLS® #E4451233

\$514,900

3 Bedroom, 2.50 Bathroom, 1,748 sqft

Single Family on 0.00 Acres

Kinglet Gardens, Edmonton, AB

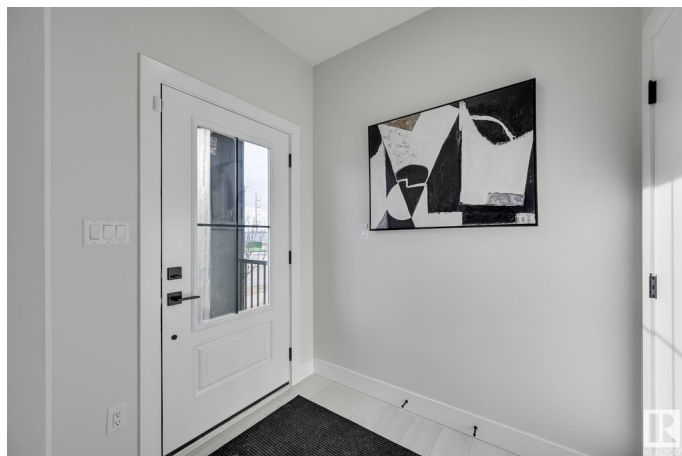
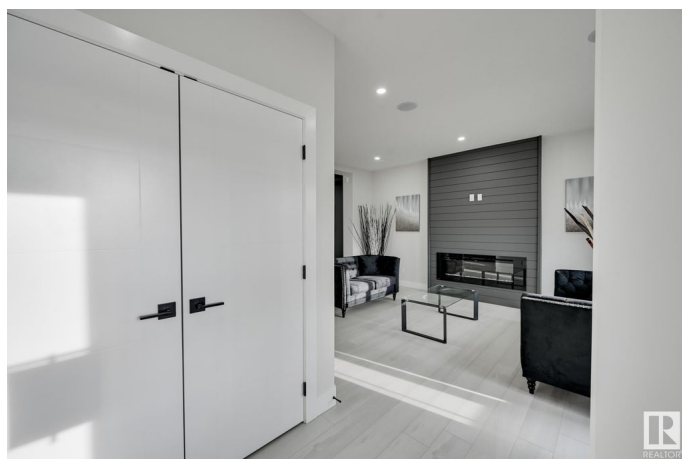
Welcome to this brand new 1748 SQFT Birmingham II model by award winning builder Blackstone Homes in the upscale area of Kinglet, Big Lake. Upon entry, you will be welcomed by spacious foyer and a huge great room offering electric fireplace finished with feature wall, dining room with beautiful coffered ceiling, spacious kitchen offering up to the ceiling soft closing cabinets. Back entrance offers a much needed mudroom with bench. Main floor den for work from home option. The 2nd floor offers 3 large bedrooms, 2 baths, bonus room & laundry. Master bedroom is huge with beautiful feature wall and an en-suite with good size closet. Other upgrades - Separate entrance, 9' main/basement ceiling, MDF shelving, upgraded electrical, flooring & black plumbing fixtures, feature walls, upgraded quartz throughout, appliances included & New Home Warranty. Great location-close to Yellowhead and Anthony Henday park, shopping and amenities. Pictures are from the show home, some features/options will be different.

Built in 2025

Essential Information

MLS® # E4451233

Price \$514,900



Bedrooms	3
Bathrooms	2.50
Full Baths	2
Half Baths	1
Square Footage	1,748
Acres	0.00
Year Built	2025
Type	Single Family
Sub-Type	Detached Single Family
Style	2 Storey
Status	Active

Community Information

Address	N/A
Area	Edmonton
Subdivision	Kinglet Gardens
City	Edmonton
County	ALBERTA
Province	AB
Postal Code	T5S 0R3

Amenities

Amenities	Carbon Monoxide Detectors, Ceiling 9 ft., Closet Organizers, Detectors Smoke, No Animal Home, No Smoking Home, Vinyl Windows, 9 ft. Basement Ceiling
Parking	Parking Pad Cement/Paved

Interior

Interior Features	ensuite bathroom
Appliances	Dishwasher-Built-In, Dryer, Hood Fan, Refrigerator, Stove-Electric, Washer
Heating	Forced Air-1, Natural Gas
Fireplace	Yes
Fireplaces	Insert
Stories	2
Has Basement	Yes
Basement	Full, Unfinished

Exterior

Exterior	Wood, Stone, Vinyl
Exterior Features	Back Lane, Golf Nearby, Not Fenced, Not Landscaped, Park/Reserve, Picnic Area, Playground Nearby, Shopping Nearby
Roof	Asphalt Shingles
Construction	Wood, Stone, Vinyl
Foundation	Concrete Perimeter

Additional Information

Date Listed	August 5th, 2025
Days on Market	2
Zoning	Zone 59
HOA Fees Freq.	Annually

DATA IS DEEMED RELIABLE BUT IS NOT GUARANTEED ACCURATE BY THE REALTORS® ASSOCIATION OF EDMONTON. COPYRIGHT 2025 BY THE REALTORS® ASSOCIATION OF EDMONTON. ALL RIGHTS RESERVED. Trademarks are owned or controlled by the Canadian Real Estate Association (CREA) and identify real estate professionals who are members of CREA (REALTOR®, REALTORS®) and/or the quality of services they provide (MLS®, Multiple Listing Service®)

Listing information last updated on August 7th, 2025 at 8:02am MDT