

\$419,900 - 128 Warwick Road, Edmonton

MLS® #E4451422

\$419,900

4 Bedroom, 2.00 Bathroom, 1,105 sqft

Single Family on 0.00 Acres

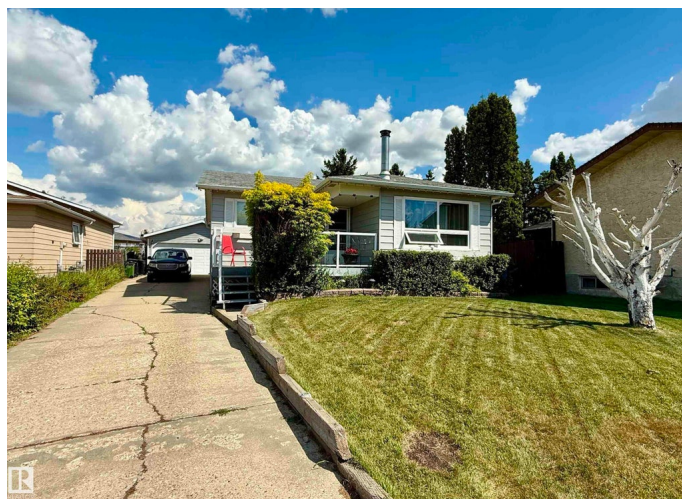
Dunluce, Edmonton, AB

Don't miss this perfect opportunity in Dunluce! This bungalow in a quiet cul-de-sac features a front porch off the entrance, large living room full of natural light, the kitchen is designed perfectly being open to a dining area with views of the backyard. Main floor features a large updated 4 piece bathroom and 3 bedrooms including a large primary suite with double closets! The fully finished basement offers a huge recreational room with a wood burning stove. There is a large fourth bedroom, a storage area, and another updated 3 piece bathroom. The huge fully fenced backyard is sure to impress with a patio area, plenty of space for the kids to play, a storage shed, and an insulated double car garage. This family home is perfectly located with easy access to parks, schools, public transportation, shopping, and the Anthony Henday!

Built in 1982

Essential Information

MLS® #	E4451422
Price	\$419,900
Bedrooms	4
Bathrooms	2.00
Full Baths	2
Square Footage	1,105
Acres	0.00



Year Built	1982
Type	Single Family
Sub-Type	Detached Single Family
Style	Bungalow
Status	Active

Community Information

Address	128 Warwick Road
Area	Edmonton
Subdivision	Dunluce
City	Edmonton
County	ALBERTA
Province	AB
Postal Code	T5Y 4P8

Amenities

Amenities	Front Porch
Parking Spaces	4
Parking	Double Garage Detached

Interior

Appliances	Dishwasher-Built-In, Dryer, Garage Control, Garage Opener, Microwave Hood Fan, Refrigerator, Storage Shed, Stove-Electric, Washer, Window Coverings
Heating	Forced Air-1, Natural Gas
Fireplace	Yes
Fireplaces	Woodstove
Stories	2
Has Basement	Yes
Basement	Full, Finished

Exterior

Exterior	Wood, Stucco
Exterior Features	Cul-De-Sac, Fenced, Public Transportation, Schools, Shopping Nearby
Roof	Asphalt Shingles
Construction	Wood, Stucco
Foundation	Concrete Perimeter

Additional Information

Date Listed August 6th, 2025

Days on Market 1

Zoning Zone 27

DATA IS DEEMED RELIABLE BUT IS NOT GUARANTEED ACCURATE BY THE REALTORS® ASSOCIATION OF EDMONTON. COPYRIGHT 2025 BY THE REALTORS® ASSOCIATION OF EDMONTON. ALL RIGHTS RESERVED. Trademarks are owned or controlled by the Canadian Real Estate Association (CREA) and identify real estate professionals who are members of CREA (REALTOR®, REALTORS®) and/or the quality of services they provide (MLS®, Multiple Listing Service®)

Listing information last updated on August 7th, 2025 at 8:02am MDT