

## \$585,000 - 9335 226 Street, Edmonton

MLS® #E4451557

**\$585,000**

4 Bedroom, 3.00 Bathroom, 1,920 sqft  
Single Family on 0.00 Acres

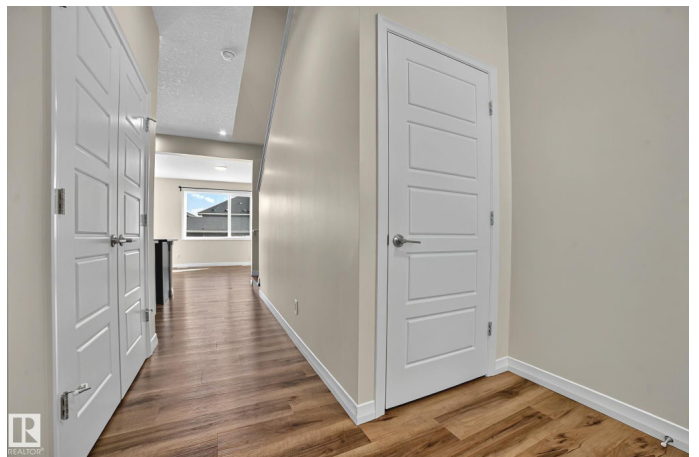
Secord, Edmonton, AB

Welcome to this beautifully kept and upgraded 2-storey home in the vibrant West Edmonton community of Secord! With 1,920 sq. ft. of living space, this modern gem offers 4 spacious bedrooms and 3 full bathrooms, including a main floor bed & bath—ideal for guests or multigenerational living. The open concept layout features a large kitchen island for entertaining, upgraded appliance package, and a walk-thru pantry from the garage. The spacious and open layout living room offers large windows with abundant natural light, adjacent to the bright dining area. Upstairs, relax in the spacious bonus room, retreat to a luxurious 5-piece primary ensuite, and enjoy the convenience of upper floor laundry. Enjoy energy savings with solar panels and future potential with an unfinished basement featuring a separate entrance. Stylish, smart, and ready for you!

Built in 2022

### Essential Information

MLS® #	E4451557
Price	\$585,000
Bedrooms	4
Bathrooms	3.00
Full Baths	3
Square Footage	1,920



Acres	0.00
Year Built	2022
Type	Single Family
Sub-Type	Detached Single Family
Style	2 Storey
Status	Active

### **Community Information**

Address	9335 226 Street
Area	Edmonton
Subdivision	Secord
City	Edmonton
County	ALBERTA
Province	AB
Postal Code	T5T 7R5

### **Amenities**

Amenities	On Street Parking, Carbon Monoxide Detectors, Detectors Smoke, Hot Water Instant, No Animal Home, No Smoking Home, HRV System, Solar Equipment
Parking	Double Garage Attached, Front Drive Access

### **Interior**

Interior Features	ensuite bathroom
Appliances	Dishwasher-Built-In, Dryer, Garage Control, Garage Opener, Hood Fan, Oven-Microwave, Refrigerator, Stove-Electric, Washer
Heating	Forced Air-2, Natural Gas
Stories	2
Has Basement	Yes
Basement	Full, Unfinished

### **Exterior**

Exterior	Wood, Hardie Board Siding, Stone, Vinyl
Exterior Features	Back Lane, Corner Lot, Flat Site, Playground Nearby, Public Transportation, Schools, Shopping Nearby
Roof	Asphalt Shingles
Construction	Wood, Hardie Board Siding, Stone, Vinyl
Foundation	Concrete Perimeter

### **Additional Information**

Date Listed August 6th, 2025

Days on Market 9

Zoning Zone 58

DATA IS DEEMED RELIABLE BUT IS NOT GUARANTEED ACCURATE BY THE REALTORS® ASSOCIATION OF EDMONTON. COPYRIGHT 2025 BY THE REALTORS® ASSOCIATION OF EDMONTON. ALL RIGHTS RESERVED. Trademarks are owned or controlled by the Canadian Real Estate Association (CREA) and identify real estate professionals who are members of CREA (REALTOR®, REALTORS®) and/or the quality of services they provide (MLS®, Multiple Listing Service®)

Listing information last updated on August 15th, 2025 at 12:03pm MDT