

\$187,500 - 2081 Saddleback Road, Edmonton

MLS® #E4452442

\$187,500

2 Bedroom, 1.00 Bathroom, 1,053 sqft

Condo / Townhouse on 0.00 Acres

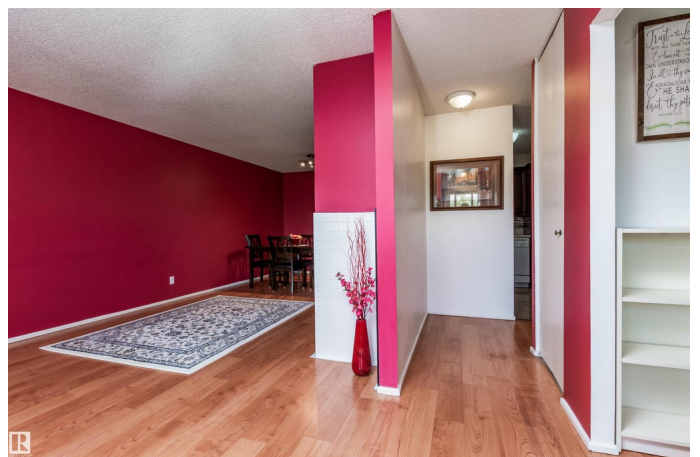
Skyrattler, Edmonton, AB

Top-Floor Corner unit Condo with Walk-In Closets in Every Bedroom! Bright & stylish 2-BED + DEN home in sought-after Shadow Ridge! Loads of windows, tile surrounding electric fireplace & sunny balcony. Two spacious bedrooms, the main bath features a second entrance from the primary, acting as an en suite as well, boasting a deep soaker tub with beautiful counter tops matching the kitchen. The den is perfect for a home office or can easily be converted into a 3rd bedroom. Youâ€™ll love the in-suite laundry with extra cabinets above, full walk-in pantry, and incredible storageâ€”plus a utility room & storage room off the balcony. Assigned parking included. Beautifully landscaped complex close to shopping, schools & transitâ€”move-in ready!

Built in 1978

Essential Information

MLS® #	E4452442
Price	\$187,500
Bedrooms	2
Bathrooms	1.00
Full Baths	1
Square Footage	1,053
Acres	0.00
Year Built	1978



Type	Condo / Townhouse
Sub-Type	Carriage
Style	Bungalow
Status	Active

Community Information

Address	2081 Saddleback Road
Area	Edmonton
Subdivision	Skyrattler
City	Edmonton
County	ALBERTA
Province	AB
Postal Code	T6J 4T4

Amenities

Amenities	Detectors Smoke
Parking Spaces	1
Parking	Stall

Interior

Appliances	Dishwasher-Built-In, Dryer, Microwave Hood Fan, Refrigerator, Stove-Electric, Washer, Window Coverings
Heating	Forced Air-1, Natural Gas
Fireplace	Yes
Fireplaces	Tile Surround
Stories	1
Has Basement	Yes
Basement	None, No Basement

Exterior

Exterior	Wood, Vinyl
Exterior Features	Landscaped, Public Transportation, Schools, Shopping Nearby, Treed Lot
Roof	Asphalt Shingles
Construction	Wood, Vinyl
Foundation	Concrete Perimeter

Additional Information

Date Listed	August 11th, 2025
-------------	-------------------

Days on Market 1
Zoning Zone 16
Condo Fee \$376

DATA IS DEEMED RELIABLE BUT IS NOT GUARANTEED ACCURATE BY THE REALTORS® ASSOCIATION OF EDMONTON. COPYRIGHT 2025 BY THE REALTORS® ASSOCIATION OF EDMONTON. ALL RIGHTS RESERVED.Trademarks are owned or controlled by the Canadian Real Estate Association (CREA) and identify real estate professionals who are members of CREA (REALTOR®, REALTORS®) and/or the quality of services they provide (MLS®, Multiple Listing Service®)
Listing information last updated on August 12th, 2025 at 8:32am MDT