

\$439,900 - 106 South Creek Wynd, Stony Plain

MLS® #E4455525

\$439,900

4 Bedroom, 2.50 Bathroom, 1,585 sqft

Single Family on 0.00 Acres

South Creek, Stony Plain, AB

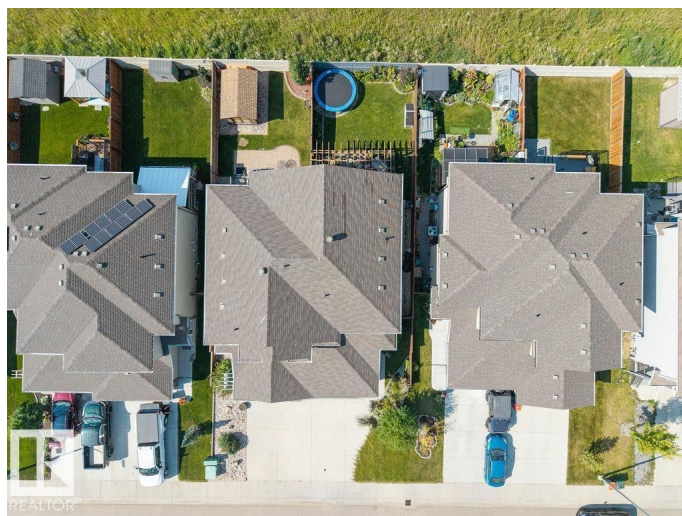
This modern duplex offers impressive design and a functional open floor plan. The kitchen features rich maple cabinets, exotic granite countertops, and a raised eating bar island, opening to a bright great room with a 36" gas fireplace and custom tiled mantel. The main level is enhanced with stylish shiplap accents, adding warmth and character. Upstairs, you'll find 3 spacious bedrooms, including a primary suite with a walk-in closet and 4-pc bath, along with the convenience of an upper-level laundry room. The partially finished basement adds even more living space with a bedroom, den, living room, and roughed-in bathroom. Outside, enjoy beautifully landscaped grounds with a solid wood pergola and stunning views of the surrounding farmers' fields. Additional highlights include central air conditioning, a double attached garage, and a striking stone exterior. Perfectly located near the Stony Plain Golf Course and close to schools, shopping, and amenities—this gorgeous home is a must-see!

Built in 2017

Essential Information

MLS® # E4455525

Price \$439,900



Bedrooms	4
Bathrooms	2.50
Full Baths	2
Half Baths	1
Square Footage	1,585
Acres	0.00
Year Built	2017
Type	Single Family
Sub-Type	Half Duplex
Style	2 Storey
Status	Active

Community Information

Address	106 South Creek Wynd
Area	Stony Plain
Subdivision	South Creek
City	Stony Plain
County	ALBERTA
Province	AB
Postal Code	T7X 2X2

Amenities

Amenities	Off Street Parking, On Street Parking, Deck, No Smoking Home
Parking	Double Garage Attached

Interior

Interior Features	ensuite bathroom
Appliances	Air Conditioning-Central, Dishwasher-Built-In, Dryer, Refrigerator, Stove-Electric, Washer
Heating	Forced Air-1, Natural Gas
Fireplaces	Tile Surround
Stories	3
Has Basement	Yes
Basement	Full, Partially Finished

Exterior

Exterior	Wood, Vinyl
Exterior Features	Fenced, Flat Site, Landscaped, Schools, Shopping Nearby
Roof	Asphalt Shingles

Construction	Wood, Vinyl
Foundation	Concrete Perimeter

School Information

Elementary	Forest Green School
Middle	Westview School
High	Memorial Composite High

Additional Information

Date Listed	August 31st, 2025
Days on Market	2
Zoning	Zone 91

DATA IS DEEMED RELIABLE BUT IS NOT GUARANTEED ACCURATE BY THE REALTORS® ASSOCIATION OF EDMONTON. COPYRIGHT 2025 BY THE REALTORS® ASSOCIATION OF EDMONTON. ALL RIGHTS RESERVED.Trademarks are owned or controlled by the Canadian Real Estate Association (CREA) and identify real estate professionals who are members of CREA (REALTOR®, REALTORS®) and/or the quality of services they provide (MLS®, Multiple Listing Service®)

Listing information last updated on September 2nd, 2025 at 5:17am MDT