

\$625,000 - 1627 Plum Circle Circle, Edmonton

MLS® #E4457302

\$625,000

4 Bedroom, 3.50 Bathroom, 1,549 sqft
Single Family on 0.00 Acres

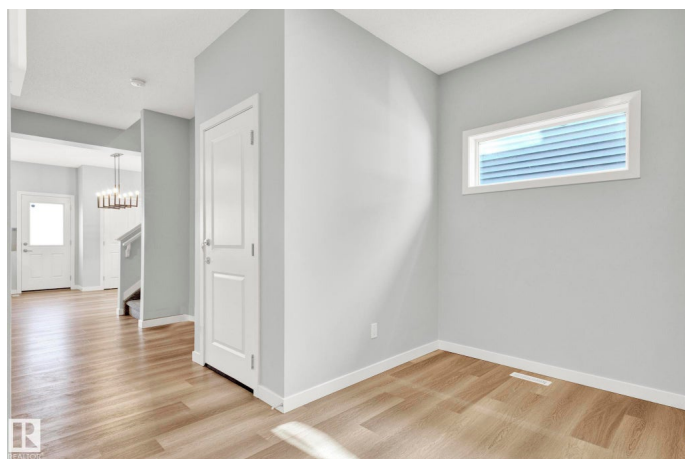
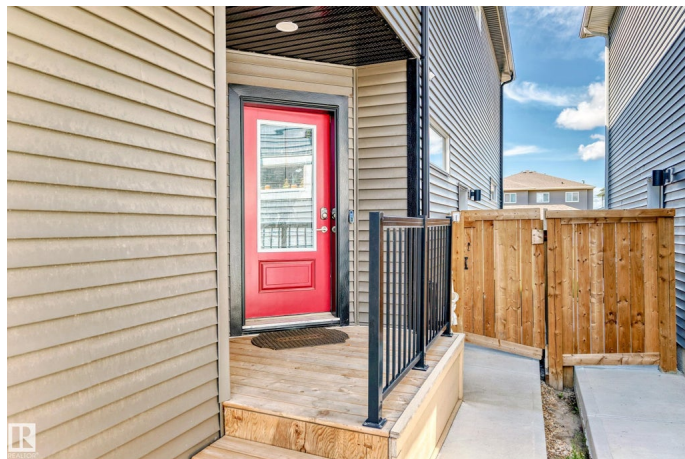
The Orchards At Ellerslie, Edmonton, AB

Welcome to your new home in The Orchards!
This spacious 3+1 bedroom beauty comes complete with a LEGAL basement suite—perfect for generating rental income or hosting extended family. Start your mornings with the sunrise on your brand-new deck, and enjoy peace of mind with a fully fenced yard and double attached garage. Just steps from top-rated schools, parks, shopping, and only 15 minutes to the airport. With a total of 2 living rooms, 4 bedrooms, and 3.5 washrooms, this home is the perfect mix of style, comfort, convenience, and smart investment!

Built in 2021

Essential Information

MLS® #	E4457302
Price	\$625,000
Bedrooms	4
Bathrooms	3.50
Full Baths	3
Half Baths	1
Square Footage	1,549
Acres	0.00
Year Built	2021
Type	Single Family
Sub-Type	Detached Single Family
Style	2 Storey



Status Active

Community Information

Address 1627 Plum Circle Circle
Area Edmonton
Subdivision The Orchards At Ellerslie
City Edmonton
County ALBERTA
Province AB
Postal Code T6X 2X1

Amenities

Amenities Carbon Monoxide Detectors, Ceiling 9 ft., Deck, See Remarks
Parking Double Garage Attached

Interior

Interior Features ensuite bathroom
Appliances Dishwasher-Built-In, Dryer, Microwave Hood Fan, Stacked Washer/Dryer, Stove-Electric, Stove-Gas, Washer, Refrigerators-Two
Heating Forced Air-2, Natural Gas
Fireplace Yes
Fireplaces Insert
Stories 3
Has Suite Yes
Has Basement Yes
Basement Full, Finished

Exterior

Exterior Wood, Vinyl
Exterior Features Airport Nearby, Fenced, Flat Site, Landscaped, Level Land, No Back Lane, Playground Nearby, Public Transportation, Schools, Shopping Nearby
Roof Asphalt Shingles
Construction Wood, Vinyl
Foundation Concrete Perimeter

School Information

Elementary Jan Reimer School
Middle Michael Strembitsky School
High Jan Reimer School

Additional Information

Date Listed	September 11th, 2025
Days on Market	54
Zoning	Zone 53
HOA Fees	450
HOA Fees Freq.	Monthly

DATA IS DEEMED RELIABLE BUT IS NOT GUARANTEED ACCURATE BY THE REALTORS® ASSOCIATION OF EDMONTON. COPYRIGHT 2025 BY THE REALTORS® ASSOCIATION OF EDMONTON. ALL RIGHTS RESERVED. Trademarks are owned or controlled by the Canadian Real Estate Association (CREA) and identify real estate professionals who are members of CREA (REALTOR®, REALTORS®) and/or the quality of services they provide (MLS®, Multiple Listing Service®)

Listing information last updated on November 4th, 2025 at 6:17pm MST