

## \$350,000 - 12315 103 Street, Edmonton

MLS® #E4460302

**\$350,000**

3 Bedroom, 1.00 Bathroom, 1,067 sqft  
Single Family on 0.00 Acres

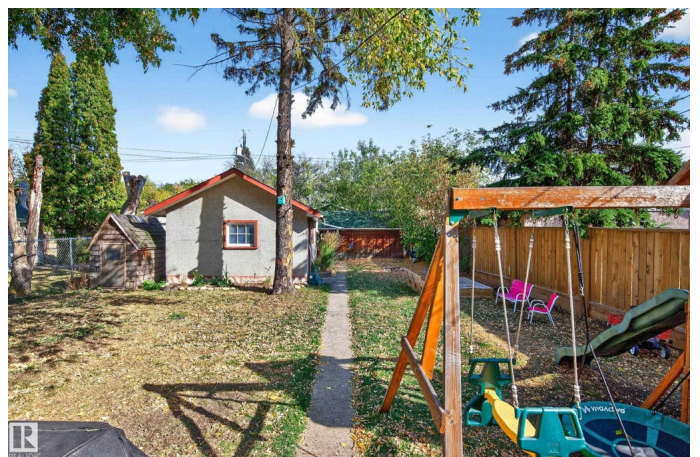
Westwood (Edmonton), Edmonton, AB

Stunning Style & Excellent Location! This beautiful bright and modern designed 1.5 storey home, is located in the perfect spot a quiet tree-lined street in Westwood with convenient access to Downtown and the Yellowhead! The huge yard (42' x 150') is the perfect place for pets or kids to run around or host a back yard bbq! New shingles in 2023 and the deck and fences are both newer as well. Spacious throughout, with 2 bedrooms on the second floor and 1 bedroom on the main floor, giving flexibility for a home office space as an option. Plenty of storage throughout the home and adorable play space in the upstairs kids' bedroom! This basement is unfinished to use or develop as you wish. Walking distance to Vanguard College, 15-20 mins walk to NAIT, and 20 mins by transit to The Royal Alexandra Hospital. Come see this wonderful home in Westwood!

Built in 1950

### Essential Information

MLS® #	E4460302
Price	\$350,000
Lease Rate	\$13
Bedrooms	3
Bathrooms	1.00
Full Baths	1



Square Footage	1,067
Acres	0.00
Year Built	1950
Type	Single Family
Sub-Type	Detached Single Family
Style	1 and Half Storey
Status	Active

### **Community Information**

Address	12315 103 Street
Area	Edmonton
Subdivision	Westwood (Edmonton)
City	Edmonton
County	ALBERTA
Province	AB
Postal Code	T5G 2K4

### **Amenities**

Amenities	Deck
Parking Spaces	2
Parking	Parking Pad Cement/Paved, Single Carport, Single Garage Detached

### **Interior**

Appliances	Air Conditioner-Window, Dryer, Hood Fan, Oven-Microwave, Refrigerator, Stove-Electric, Washer
Heating	Forced Air-1, Natural Gas
Stories	2
Has Basement	Yes
Basement	Full, Unfinished

### **Exterior**

Exterior	Wood, Vinyl
Exterior Features	Playground Nearby, Public Transportation, Schools
Roof	Asphalt Shingles
Construction	Wood, Vinyl
Foundation	Concrete Perimeter

### **School Information**

Elementary	Delton
------------	--------

Middle Spruce Avenue  
High Victoria

### **Additional Information**

Date Listed October 1st, 2025  
Days on Market 34  
Zoning Zone 08

DATA IS DEEMED RELIABLE BUT IS NOT GUARANTEED ACCURATE BY THE REALTORS® ASSOCIATION OF EDMONTON. COPYRIGHT 2025 BY THE REALTORS® ASSOCIATION OF EDMONTON. ALL RIGHTS RESERVED. Trademarks are owned or controlled by the Canadian Real Estate Association (CREA) and identify real estate professionals who are members of CREA (REALTOR®, REALTORS®) and/or the quality of services they provide (MLS®, Multiple Listing Service®)

Listing information last updated on November 4th, 2025 at 4:17am MST