

\$120,000 - 2 11265 31 Avenue, Edmonton

MLS® #E4461535

\$120,000

3 Bedroom, 1.50 Bathroom, 972 sqft

Condo / Townhouse on 0.00 Acres

Sweet Grass, Edmonton, AB

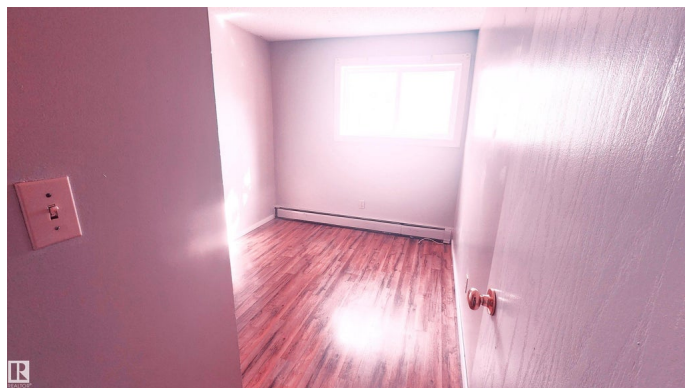
NEW RENOVATED 3 Bedroom apartment with 1.5 WASHROOMS. New flooring, New painting, Updated Kitchen and Washrooms. Ground floor apartment with direct access to FRONT YARD and PATIO. Very close to DAYCARE, PARK and School. The complex also has SWIMMING POOL, BASKET BALL COURT, and GYM. The condo fee includes all UTILITES and also access to all apartment complex facilities.

Built in 1977

Essential Information

MLS® #	E4461535
Price	\$120,000
Bedrooms	3
Bathrooms	1.50
Full Baths	1
Half Baths	1
Square Footage	972
Acres	0.00
Year Built	1977
Type	Condo / Townhouse
Sub-Type	Lowrise Apartment
Style	Single Level Apartment
Status	Active

Community Information



Address	2 11265 31 Avenue
Area	Edmonton
Subdivision	Sweet Grass
City	Edmonton
County	ALBERTA
Province	AB
Postal Code	T6V 3V7

Amenities

Amenities	Detectors Smoke, Front Porch, No Smoking Home, Vinyl Windows, Rental Pool Option
Parking Spaces	2
Parking	Stall

Interior

Interior Features	ensuite bathroom
Appliances	Refrigerator, Stove-Electric
Heating	See Remarks
# of Stories	4
Stories	4
Has Basement	Yes
Basement	None, No Basement

Exterior

Exterior	Wood, Vinyl
Exterior Features	Backs Onto Park/Trees, Fenced, Flat Site, Low Maintenance Landscape, Picnic Area, Playground Nearby, Public Swimming Pool, Schools, Shopping Nearby
Roof	See Remarks
Construction	Wood, Vinyl
Foundation	Concrete Perimeter

Additional Information

Date Listed	October 9th, 2025
Days on Market	1
Zoning	Zone 16
Condo Fee	\$805

DATA IS DEEMED RELIABLE BUT IS NOT GUARANTEED ACCURATE BY THE REALTORS® ASSOCIATION OF EDMONTON. COPYRIGHT 2025 BY THE REALTORS® ASSOCIATION OF EDMONTON. ALL RIGHTS RESERVED. Trademarks are owned or controlled by the Canadian Real Estate Association (CREA) and identify real

estate professionals who are members of CREA (REALTOR®®, REALTORS®®) and/or the quality of services they provide (MLS®®, Multiple Listing Service®®)

Listing information last updated on October 10th, 2025 at 1:32pm MDT