

## \$389,900 - 6128 145 Avenue, Edmonton

MLS® #E4461703

**\$389,900**

4 Bedroom, 2.00 Bathroom, 1,056 sqft

Single Family on 0.00 Acres

McLeod, Edmonton, AB

Gorgeous, well-maintained brick exterior bungalow on a large corner lot, showcasing true pride of ownership. Ideally located across from a massive park, this home offers space, charm, and comfort inside and out. The main floor features 3 bedrooms, a full bathroom, a bright kitchen with dining area, a formal dining room, and a lovely outdoor sunroom perfect for relaxing or entertaining. Downstairs is fully finished and built for hosting, with a spacious family room featuring a stunning brick fireplace and a custom bar. A fourth bedroom and a second full bathroom add flexibility for guests, a home office, or extended family. Over the years, updates include hardwood and oak finishes, windows, roof, new driveway, H2O tank, and furnace. The large lot provides endless potential for outdoor living, gardening, or future development. Rare opportunity to own a move-in-ready home in a prime location, just steps from green space, ideal for families, retirees, or anyone seeking comfort and community.

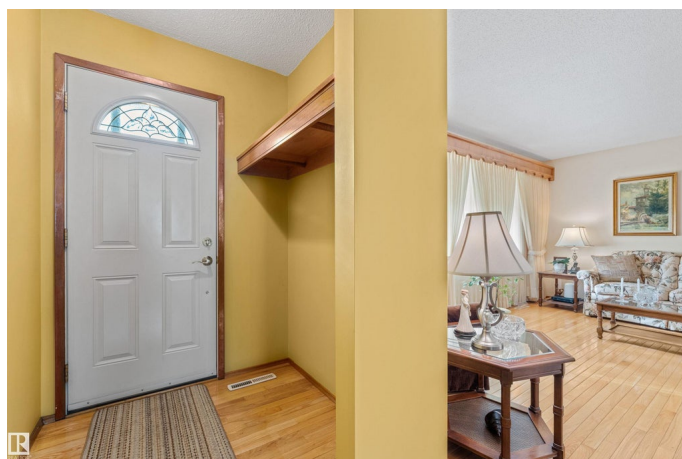
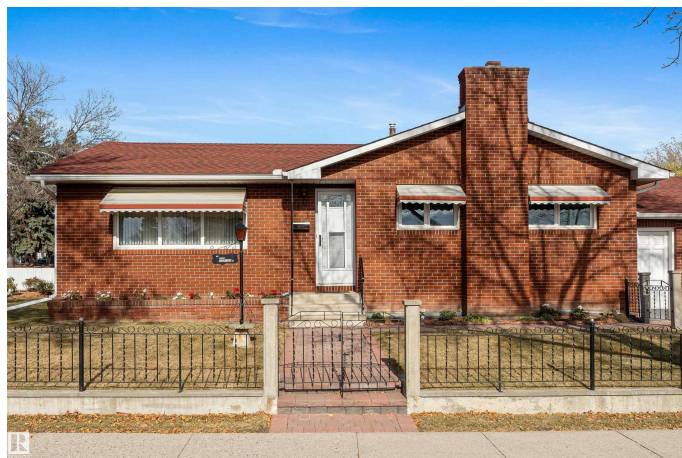
Built in 1968

### Essential Information

MLS® # E4461703

Price \$389,900

Bedrooms 4



Bathrooms	2.00
Full Baths	2
Square Footage	1,056
Acres	0.00
Year Built	1968
Type	Single Family
Sub-Type	Detached Single Family
Style	Bungalow
Status	Active

### **Community Information**

Address	6128 145 Avenue
Area	Edmonton
Subdivision	Mcleod
City	Edmonton
County	ALBERTA
Province	AB
Postal Code	T5A 1S8

### **Amenities**

Amenities	Bar, No Smoking Home, Sunroom, See Remarks
Parking	Double Garage Attached

### **Interior**

Appliances	Dryer, Freezer, Microwave Hood Fan, Stove-Electric, Washer, Refrigerators-Two
Heating	Forced Air-1, Natural Gas
Fireplace	Yes
Fireplaces	Brick Facing
Stories	2
Has Basement	Yes
Basement	Full, Finished

### **Exterior**

Exterior	Wood, Brick
Exterior Features	Fenced, Landscaped, Playground Nearby, Public Transportation, Schools, Shopping Nearby, See Remarks
Roof	Asphalt Shingles
Construction	Wood, Brick

Foundation                      Concrete Perimeter

**Additional Information**

Date Listed                      October 10th, 2025

Days on Market                1

Zoning                            Zone 02

DATA IS DEEMED RELIABLE BUT IS NOT GUARANTEED ACCURATE BY THE REALTORS® ASSOCIATION OF EDMONTON. COPYRIGHT 2025 BY THE REALTORS® ASSOCIATION OF EDMONTON. ALL RIGHTS RESERVED.Trademarks are owned or controlled by the Canadian Real Estate Association (CREA) and identify real estate professionals who are members of CREA (REALTOR®, REALTORS®) and/or the quality of services they provide (MLS®, Multiple Listing Service®)

Listing information last updated on October 11th, 2025 at 12:32pm MDT