

Courtesy Of Kelly L Grant Of MaxWell Polaris

\$497,900 - 16 Gatewood Avenue, St. Albert

MLS® #E4461779

\$497,900

4 Bedroom, 2.50 Bathroom, 1,886 sqft
Single Family on 0.00 Acres

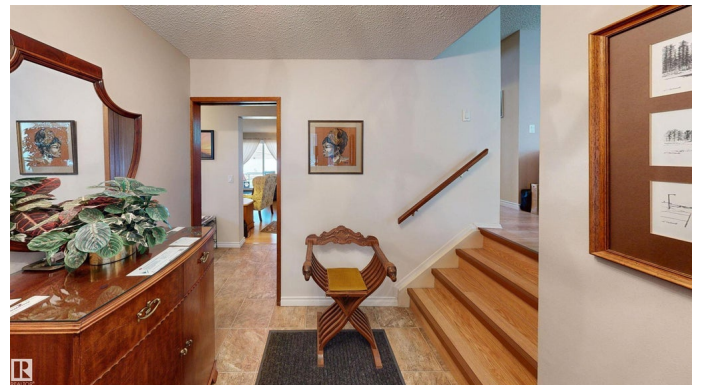
Grandin, St. Albert, AB

VERY GOOD CONDITION FAMILY HOME AWAITING YOUR FINISHING TOUCHES IN SOUTHWEST ST. ALBERT -- COMMUNITY OF GRANDIN! List of property features plus functional upgrades over the years: * Total of 4 Bedrooms + Den & 2.5 Bathrooms * Interior Painting * Laminate & Linoleum Flooring * Hunter Douglas Remote Blinds for Living Room Bow Window * Nice-sized Family Room with Brick Surround Gas Fireplace * Sizeable Lower-Level Crawl Space Storage * Furnace, Air Conditioner, & Hot Water Tank * Windows * Exterior & Attic Insulation * Siding & Eavestroughs * Fencing & Retaining Wall * Low Maintenance Landscaping * Garage Door * Driveway & * 60-Days - Negotiable Possession. Excellent location within close proximity to variety of schools, parks, playgrounds, recreation, restaurants, Sir Winston Churchill Avenue, Riel Business Park, Sturgeon River Valley, & Downtown / City Hall.

Built in 1972

Essential Information

MLS® #	E4461779
Price	\$497,900
Lease Rate	\$18
Bedrooms	4
Bathrooms	2.50



Full Baths	2
Half Baths	1
Square Footage	1,886
Acres	0.00
Year Built	1972
Type	Single Family
Sub-Type	Detached Single Family
Style	4 Level Split
Status	Active

Community Information

Address	16 Gatewood Avenue
Area	St. Albert
Subdivision	Grandin
City	St. Albert
County	ALBERTA
Province	AB
Postal Code	T8N 0Z9

Amenities

Amenities	Air Conditioner, Crawl Space, Detectors Smoke, Front Porch, Insulation-Upgraded, No Animal Home, No Smoking Home, Patio, Storage-In-Suite, Vinyl Windows, See Remarks
Parking Spaces	6
Parking	Double Garage Attached, Front Drive Access, Parking Pad Cement/Paved

Interior

Appliances	Air Conditioning-Central, Dishwasher-Built-In, Dryer, Freezer, Garage Control, Garage Opener, Hood Fan, Storage Shed, Vacuum System Attachments, Vacuum Systems, Washer, Water Softener, Window Coverings, See Remarks, Refrigerators-Two
Heating	Forced Air-1, Natural Gas
Fireplace	Yes
Fireplaces	Brick Facing
Stories	4
Has Basement	Yes
Basement	See Remarks, Partially Finished

Exterior

Exterior	Wood, Brick, Vinyl
Exterior Features	Fenced, Hillside, Landscaped, Park/Reserve, Picnic Area, Public Transportation, Schools, Shopping Nearby, Treed Lot, See Remarks
Roof	Asphalt Shingles
Construction	Wood, Brick, Vinyl
Foundation	Concrete Perimeter

School Information

Elementary	Robert Rundle
Middle	Sir George Simpson
High	Bellerose

Additional Information

Date Listed	October 10th, 2025
Days on Market	17
Zoning	Zone 24

DATA IS DEEMED RELIABLE BUT IS NOT GUARANTEED ACCURATE BY THE REALTORS® ASSOCIATION OF EDMONTON. COPYRIGHT 2025 BY THE REALTORS® ASSOCIATION OF EDMONTON. ALL RIGHTS RESERVED. Trademarks are owned or controlled by the Canadian Real Estate Association (CREA) and identify real estate professionals who are members of CREA (REALTOR®, REALTORS®) and/or the quality of services they provide (MLS®, Multiple Listing Service®)

Listing information last updated on October 27th, 2025 at 5:32am MDT